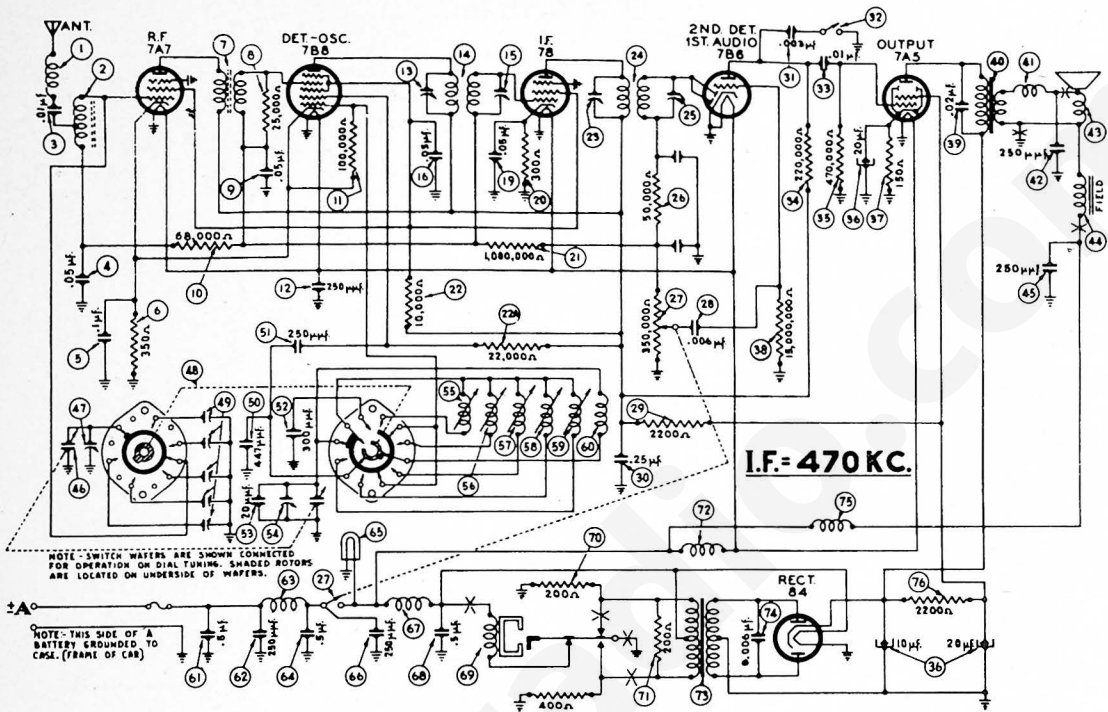


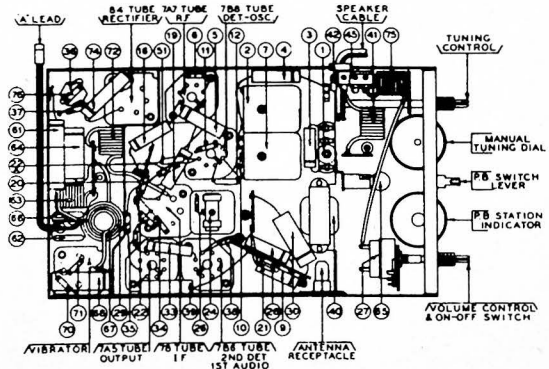
# MODEL S-1722



Aligning Procedure will be found on page 176.

## PARTS LIST

No.	Description	Part No.	No.	Description	Part No.
1	Antenna Choke	65-0102	26	Resistor (15,000,000 ohms)	33-615154
2	Antenna Transformer	65-0115	27	Condenser (.02 mfd.)	61-0077
3	Condenser (.01 mfd.)	61-0014	28	Output Transformer	65-0221
4	Condenser (.05 mfd.)	30-4444	29	Choke	32-1541
5	Condenser (.1 mfd.)	30-4499	30	Condenser (250 mmdf.)	61-0033
6	Resistor (350 ohms)	33-135334	31	Cone and Voice Coil	91-0065
7	R. F. Transformer	65-0114	32	Field Coil	Not Replaceable
8	Resistor (25,000 ohms)	33-325334	33	Condenser (250 mmdf.)	61-0033
9	Condenser (.05 mfd.)	30-4444	34	Tuning Condenser	63-0023
10	Resistor (48,000 ohms)	33-383354	35	First Padder (On Tun. Cond.)	61-0033
11	Resistor (100,000 ohms)	33-410354	36	Wafers Switch	412-1023
12	Condenser (250 mmdf.)	61-0033	37	Antenna Padder Assembly	77-0262
13	Padder (Pri. 1st I. F. Trans.)	61-0033	38	Sil. Mica Cond. (447 mmdf.)	61-0047
14	First I. F. Transformer	65-0148	39	Condenser (250 mmdf.)	30-1038
15	Padder (Sec. 1st I. F. Trans.)	61-0033	40	Sil. Mica Cond. (300 mmdf.)	61-0003
16	Resistor (.05 mfd.)	30-4444	41	Condenser (.20 mmdf.)	61-0039
17	Condenser (.05 mfd.)	30-4444	42	Second Padder (On Tun. Cond.)	61-0033
18	Resistor (300 ohms)	33-130334	43	Oscil. Trans. (550-1000 K.C.)	65-0139
19	Resistor (1,000,000 ohms)	33-510154	44	Oscil. Trans. (550-1000 K.C.)	65-0138
20	Resistor (10,000 ohms)	33-310334	45	Oscil. Trans. (750-1300 K.C.)	65-0137
21	Resistor (22,000 ohms)	33-322334	46	Oscil. Trans. (850-1400 K.C.)	65-0136
22	Padder (Pri. 2nd I. F. Trans.)	61-0033	47	Oscil. Trans. (900-1580 K.C.)	65-0169
23	Second I. F. Transformer	65-0214	48	Oscil. Trans. (manual)	65-0134
24	Padder (Sec. 2nd I. F. Trans.)	61-0033	49	Condenser (.5 mfd.)	61-0084
25	Resistor (50,000 ohms)	33-350134	50	Condenser (250 mmdf.)	61-0033
26	Volume Control (350,000 ohms) and On-Off Switch	67-0027	51	"A" Choke	32-1644
27	Condenser (6000 mmdf.)	30-4467	52	Condenser (.5 mfd.)	61-0083
28	Resistor (2200 ohms)	33-222334	53	Pilot Lamp	34-2039
29	Condenser (.25 mfd.)	30-4446	54	Condenser (250 mmdf.)	61-0033
30	Condenser (3000 mmdf.)	61-0078	55	Vibrator Choke	65-0151
31	Tone Control Switch	42-1406	56	Condenser (.5 mfd.)	61-0083
32	Condenser (.01 mfd.)	30-4169	57	Vibrator	83-0017
33	Resistor (220,000 ohms)	33-422334	58	Resistor (200 ohms)	33-120354
34	Resistor (470,000 ohms)	33-447154	59	Resistor (200 ohms)	33-120354
35	Filter Cond. (10-20-20 mfd.)	61-0076	60	Filament Choke	65-0158
36	Resistor (150 ohms)	33-115334	61	Power Transformer	65-0260
			62	Condenser (6000 mmdf.)	61-0052



No.	Description	Part No.	No.	Description	Part No.
37	Choke	32-1438	78	Knob Base	28-4184FA8
38	Resistor (2200 ohms)	33-222334	79	Fuel Gauge Resistor	77-0335
39	Drive Cord	55-0413	80	Dial Assembly (Manual)	77-0352
40	Speaker	73-0022	81	Dial Assembly (Automatic)	318-1374
41	Call Letter Kit	81-0143	82	Radio Mounting Bracket	57-0667FA3
42	Push-Button	55-0412	83	Bezel	57-0670
43	Push-Button	55-0482	84	Bezel Gasket and Grille Silk	77-0285
44	Tuning and Volume Knob	55-0486	85	Steering Col. Ground Strap	77-0336
45	Tuning and Volume Knob	27-4489			